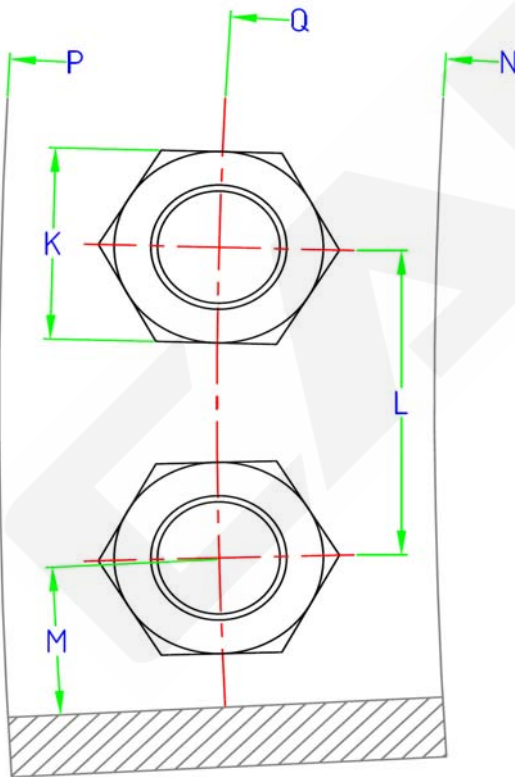
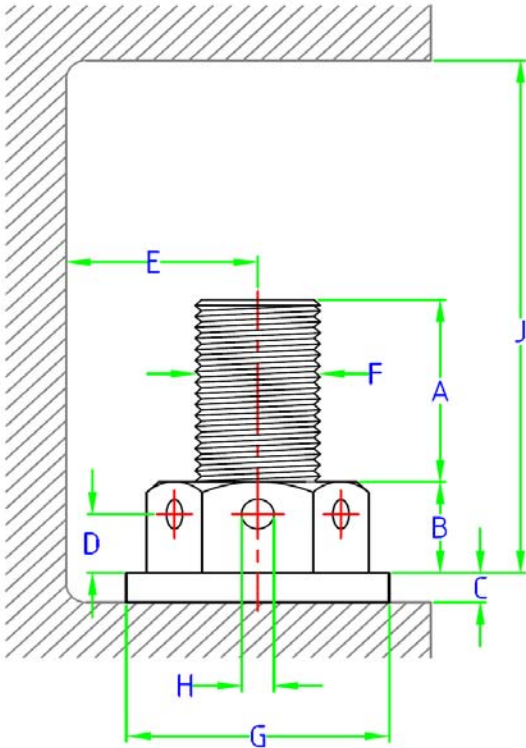


## BOLTING APPLICATION DETAILS



Company : \_\_\_\_\_

Location : \_\_\_\_\_

Require Date : \_\_\_\_\_

A \_\_\_\_\_ *Protrusion height*

B \_\_\_\_\_ *Nut height*

C \_\_\_\_\_ *Washer height*

D \_\_\_\_\_ *Height of Tommy bar hole*

E \_\_\_\_\_ *Bolt centre to nearest obstructions*

F \_\_\_\_\_ *Bolt dia x pitch*

G \_\_\_\_\_ *Washer dia*

H \_\_\_\_\_ *Tommy bar hole dia*

J \_\_\_\_\_ *Nearest overhead obstructions*

K \_\_\_\_\_ *Across flat hex / Dia round Nut*

L \_\_\_\_\_ *Bolt centre to centre*

M \_\_\_\_\_ *Bolt centre to nearest obstructions*

N \_\_\_\_\_ *ID Dia*

P \_\_\_\_\_ *OD Dia*

Q \_\_\_\_\_ *PCD Dia*

Method : \_\_\_\_\_ *Torque or Tension*

Flange : \_\_\_\_\_ *Dia x Rating*

Bolt Material : \_\_\_\_\_ *B7 / B8 / B8M/ B16 / L7/ 8.8 / 10.9 / 12.9*

Lubrication : \_\_\_\_\_ *Molykote / Machine Oil / Dry*

No. of Bolts : \_\_\_\_\_ *kN or Tonf*

Bolt Load : \_\_\_\_\_ *kN or Tonf*

Target Torque : \_\_\_\_\_ *Nm or ftlbs*

Remarks : \_\_\_\_\_

**CAMLY PTE LTD**

A: 5 Soon Lee Street #03-57 Singapore 627607

T : + 65 6503 0553 F : +65 6334 6967

E : sales@camly.sg W: www.camly.sg